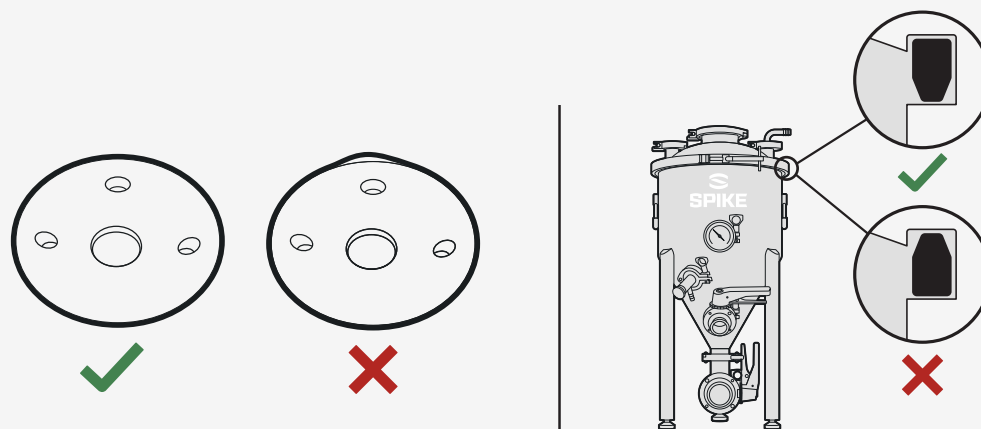


Assembly – Conical Lid

Gasket Installation

1. With the lid in front of you, take the gasket (flat side down – pointed side up) and push the gasket into the rim at the furthest side from you (12 o'clock). (see **Figure 1**)
2. Push the gasket into the rim directly in front of you (6 o'clock).
3. Push the gasket into the rim on the right side (3 o'clock), then the left side (9 o'clock).
4. Push the gasket in all the way around so it is fully seated.

Figure 1



Clamp Installation

1. Center the conical lid on the conical body. We recommend running your fingers around the conical to make sure it's sitting perfectly centered. (see **Figure 2**)
2. Wrap the conical lid clamp around the fermenter, with the T joint in the front of the fermenter.
3. Tighten the lid clamp until there is about 1/4" gap or less between the two joining ends of the clamp.

PRO TIP: If you have trouble tightening down to 1/4" gap or less, or the clamp makes a grinding sound when tightening, we recommend adding anti-seize to the lid clamp threads. We install anti-seize on every clamp when it leaves Spike however it can wear out or dry up over time. This can be picked up at any local hardware store.

Figure 2

